

## Soybean Row Spacing Trial

**Trial ID:** 2025-SRS03 – R.M. of North Norfolk

**Objective:** Quantify the agronomic and economic impacts of different row spacings on soybean production.

**Summary:** The 15" row spacing yielded significantly more than the 30" spacing by 3.3 bu/ac. At R1, R3, and R5 canopy closure in the 15" row spacing was significantly greater than in the 30" row spacing. Weed pressure was assessed at R5 and was similar between the two row spacings. Disease pressure was assessed at R6, and there was no significant difference between the two row spacings.

### Trial Information

<b>Treatment</b>	15" vs. 30" rows
<b>Soil Texture</b>	Loamy Fine Sand
<b>Previous Crop</b>	Canola
<b>Tillage</b>	Conventional Tillage
<b>Seeding Equipment</b>	60 ft Planter
<b>Seeding Date</b>	5/13/2025
<b>Variety</b>	DKB006-80
<b>Germination</b>	91%
<b>Seeding Rate</b>	140,000 seeds/ac
<b>Harvest Date</b>	10/1/2025

### Precipitation (mm)

	May	June	July	Aug	Total
<b>Rainfall</b>	28.5	14	71	100	213.5
<b>Normal</b>	64.16	85.52	67.07	65.64	282.39
<b>% Norm</b>	44%	16%	106%	152%	76%

### Plant Stand (plants/ac) †

	V2	R5
<b>15"</b>	120,625	123,125
<b>30"</b>	117,500	116,625

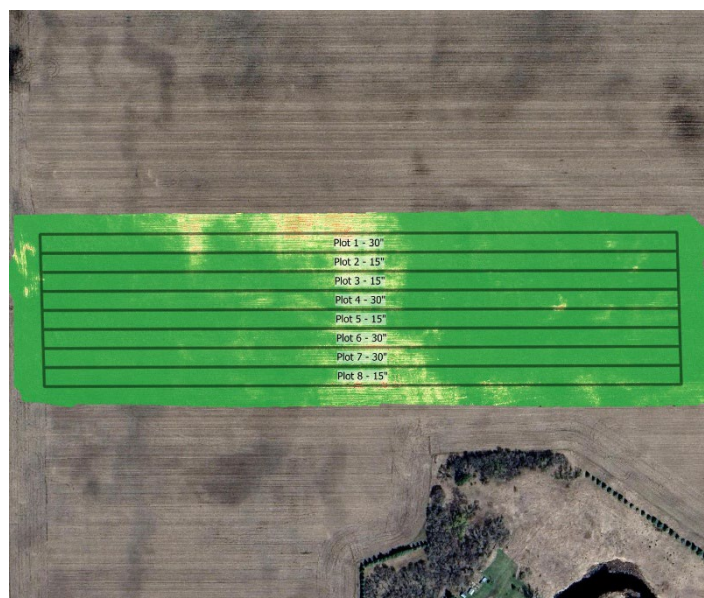
† Columns followed by different letters are significantly different from one another

### % Canopy Closure †

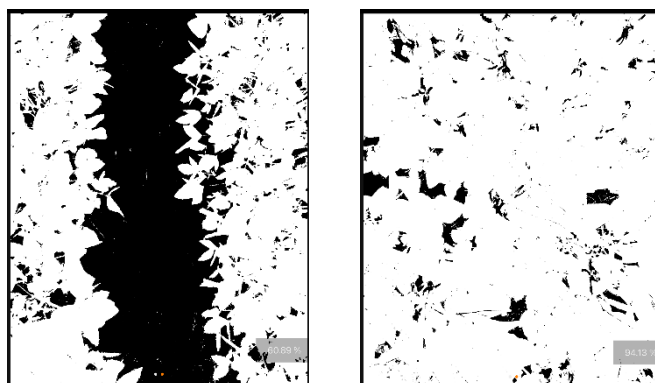
	R1	R3	R5
<b>15"</b>	77.02 A	91.7 A	95.8 A
<b>30"</b>	49.62 B	69.5 B	82.23 B

† Closure percentages in columns followed by different letters are significantly different from one another

### NDVI Field Image August 15



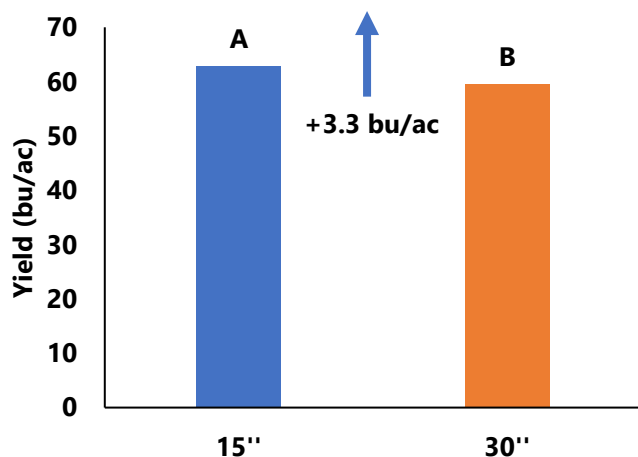
### Canopy Closure Images



Canopeo app measurements of 15" row spacing (right) and 30" row spacing (left) canopy closure at R5.

## Soybean Row Spacing Trial

### Yield by Treatment



### Overall Yield & Economics<sup>†</sup>

	Mean (bu/ac) <sup>†</sup>	Change in Profit/ac <sup>††</sup>
15"	62.8 A	n/a
30"	59.5 B	n/a
Difference	3.3	
P-Value	3.4%	
CV	0.0072	

**Significance** Yes **Economic** N/A

<sup>†</sup> Yield values in columns followed by different letters are significantly different (p-value <0.05) from one another.

<sup>††</sup> Economics of how different row widths are achieved in the field are very farm and equipment specific. As a result, they are not estimated here.

### Summary of Disease Rating (R5)<sup>†</sup>

	Incidence (% plants infected)					
	Septoria	Frog Eye	Downy Mildew	White Mould	Bacterial Blight	Powdery Mildew
15"	100 (2.08)	17.5	10 (0.1)	35 (0.4)	60	2.5 (0.03)
30"	100 (2.1)	15	12.5 (0.13)	20 (0.2)	57.5	0

<sup>†</sup> Septoria brown spot, white mould, downy mildew, and powdery mildew severity, listed in brackets, were rated on a 0-5 scale.

### Late Season Weed Pressure (R5)<sup>†</sup>

	Average Number of Weeds/ft <sup>2</sup>
15"	0.0
30"	0.5



15" row spacing (left photo) and 30" row spacing (right photo) on July 28 at R4 stage.