



**on-farm network**  
PARTICIPATORY • PRECISE • PROACTIVE

# Soybean Row Spacing Trial

**Trial ID:** 2024-SRS05 – R.M. of Hanover

**Objective:** Quantify the agronomic and economic impacts of different row spacings on soybean production.

**Summary:** The 30" spacing yielded 3.2 bu/ac more than the 15" spacing. At V2 and R5, plant stand counts were similar between spacings. The canopy in the 15" rows began to close earlier in the season than the 30" rows. Weed density and disease pressure were similar between spacings.

## Trial Information

<b>Treatment</b>	30" vs 15"
<b>Soil Texture</b>	Clay
<b>Previous Crop</b>	Corn
<b>Tillage</b>	Conventional
<b>Seeding Equipment</b>	60ft Planter
<b>Seeding Date</b>	May 23
<b>Variety</b>	P00A49X
<b>Germination</b>	87%
<b>Seeding Rate</b>	140,000 seeds/ac
<b>Harvest Date</b>	September 30

## Precipitation (mm)

	May	June	July	Aug	Total
<b>Rainfall</b>	105.5	112.2	56.8	43.1	317.6
<b>Normal</b>	57.8	89.5	80.6	71.8	299.7
<b>% Norm</b>	183%	125%	70%	60%	106%

## Plant Stand (plants/ac) †

	V2	R5
<b>30"</b>	112,000 A	105,000 A
<b>15"</b>	108,000 A	98,000 A

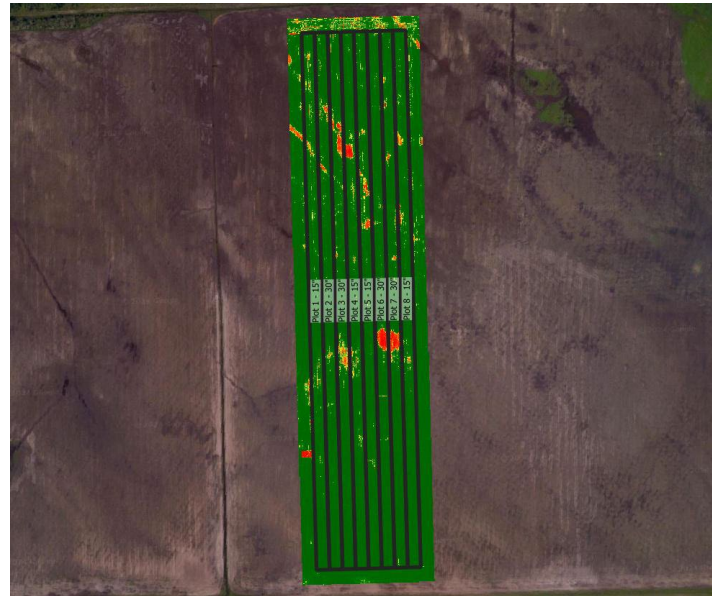
† Columns followed by different letters are significantly different from one another

## % Canopy Closure †

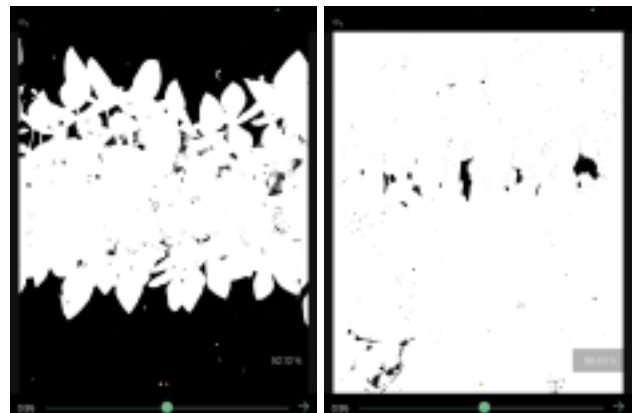
	R1	R3	R5
<b>30"</b>	65% B	95% B	98% A
<b>15"</b>	80% A	99% A	99% A

† Closure percentages in columns followed by different letters are significantly different from one another

## NDVI Field Image August 8



## Canopy Closure Images

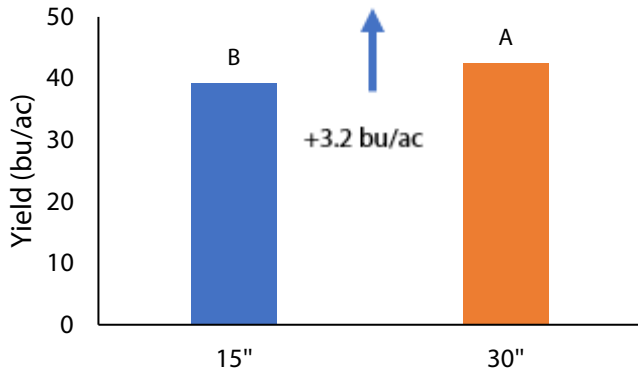


Canopeo app measurements of 30" row spacing canopy closure at R1 (left) and R5 (right).



## Soybean Row Spacing Trial

### Yield by Treatment



### Overall Yield & Economics<sup>†</sup>

	Mean (bu/ac)	Change in Profit/ac <sup>†</sup>
<b>30"</b>	42.4	n/a
<b>15"</b>	39.2	n/a
<b>Difference</b>	3.2	
<b>P-Value</b>	0.042	
<b>CV</b>	3.3%	
<b>Significance</b>	<b>Yes</b>	<b>Economic N/A</b>

<sup>†</sup> Economics of how different row widths are achieved in the field are very farm and equipment specific. As a result, they are not estimated here.

### Summary of Disease Rating (R4)<sup>†</sup>

	Incidence (% plants infected)				
	Septoria	Frog Eye	Stem Canker	White Mould	Bacterial Blight
<b>30"</b>	100% (1.3)	5%	0%	0%	53%
<b>15"</b>	100% (1.325)	0%	0%	0%	43%

### Late Season Weed Pressure (R5)

	Average Number of Weeds/ft <sup>2</sup>
<b>30"</b>	2.0
<b>15"</b>	0.6

<sup>†</sup> Septoria brown spot severity, listed in brackets, was rated on a 0-5 scale.