

# Soybean Biological Trial

**Trial ID:** 2024-SB05 – R.M. of De Salaberry

**Objective:** Quantify the agronomic and economic impacts of biological products for soybean production

**Summary:** There was no significant yield difference between soybeans treated with Envita and those without. Due to the lack of yield response, there was a decrease in profit/ac in the treated area of the trial, equivalent to the cost of product.

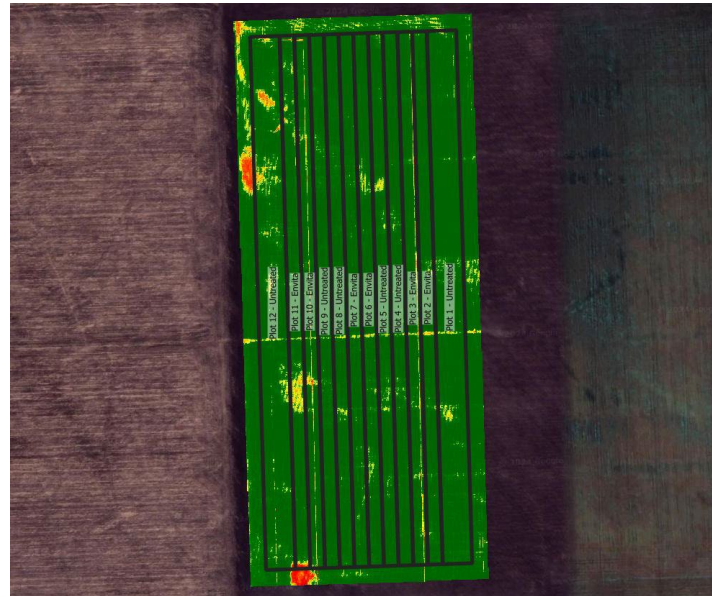
## Trial Information

<b>Treatments</b>	Envita® vs Untreated
<b>Soil Texture</b>	Clay
<b>Previous Crop</b>	Corn
<b>Tillage</b>	Conventional Till
<b>Seeding Date</b>	May 17
<b>Variety</b>	SI 00321XT
<b>Seeding Rate</b>	172,000 seeds/ac
<b>Row Spacing</b>	22"
<b>Plant Stand @ R2</b>	147,000 plants/ac
<b>Harvest Date</b>	September 28

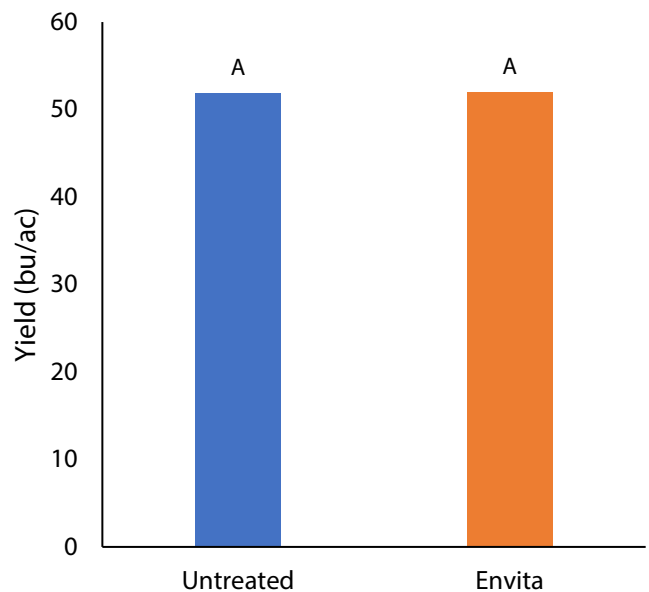
## Precipitation (mm)

	May	June	July	Aug	Total
<b>Rainfall</b>	85.9	99.3	69.6	49.7	304.5
<b>Normal</b>	52.6	94.7	69.5	51.7	268.5
<b>% Norm</b>	163%	105%	100%	96%	113%

## NDVI Field Image August 10



## Yield by Treatment





**on-farm network**  
PARTICIPATORY • PRECISE • PROACTIVE

## Soybean Biological Trial

### Overall Yield & Economics

	Mean (bu/ac)	Cost †	Change in Profit ††
<b>Envita®</b>	52.0	\$14.50/ac	-\$14.50/ac
<b>Untreated</b>	51.9		
<b>Yield Difference</b>	0.1		
<b>P-Value</b>	0.908		
<b>CV</b>	2.6%		
<b>Significance</b>	<b>No</b>	<b>Economic</b>	<b>No</b>

† Based on an estimated cost for biological products

†† Yields were not significantly different, therefore there is no increased income to offset the cost of the biological product