

# Pea Seeding Rate Trial

Trial ID: 2024-PSR02 – R.M. of Hillsburg-Roblin-Shell River

**Objective:** Quantify the agronomic and economic impacts of different field pea seeding rates.

**Summary:** The percent of seeding rate established for the low, normal and high rates was 75%, 78% and 74% respectively. There were no significant yield differences among seeding rates of 141, 180 and 216 lbs/ac. As a result, there was a decrease in profit/ac equivalent to the increase in seed cost for the higher seeding rates.

## Trial Information

Treatment (lbs/ac)	141 vs 180 vs 216
Soil Texture	Loam
Previous Crop	Canola
Tillage	Zero Till
Seeding Equipment	60ft Disc Drill
Seeding Date	April 30
Variety	AAC Carver
Row Spacing	10"
Harvest Date	August 27

## Precipitation (mm)

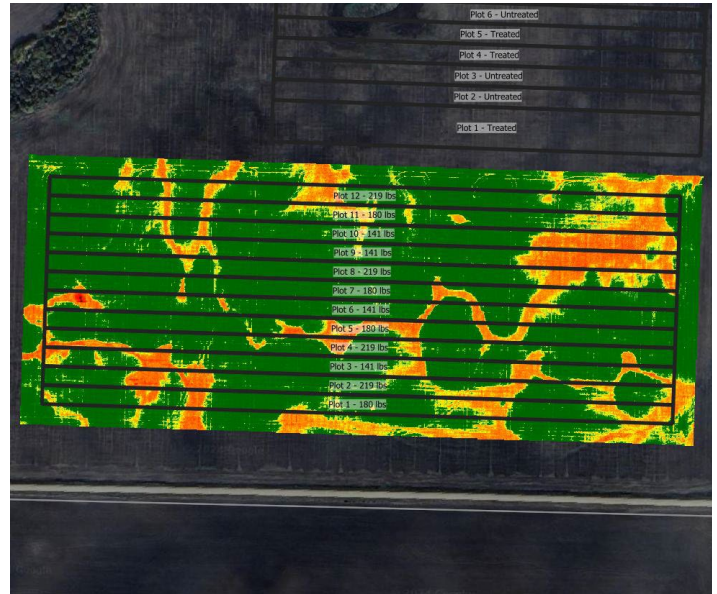
	May	June	July	Aug	Total
Rainfall	89.8	128.4	60	116	394.2
Normal	51.8	81.9	76.7	71.6	282
% Norm	173%	157%	78%	162%	140%

## Plant Stand (plants/ac) †

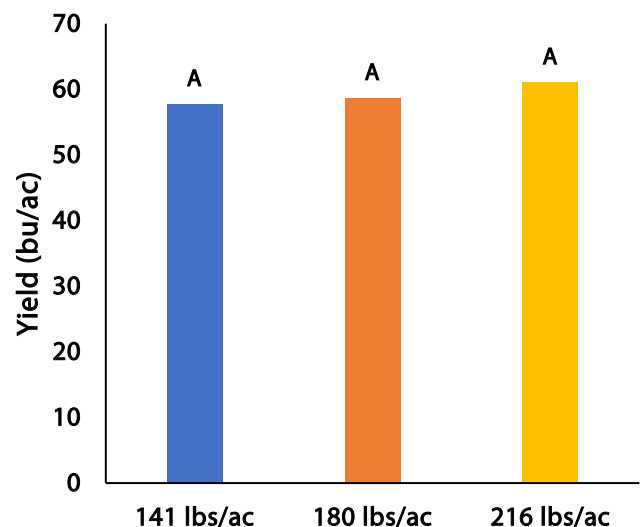
	V6	R6
141lbs/ac	199,000 B	N/A
180lbs/ac	266,000 A	N/A
216lbs/ac	304,000 A	N/A

† Averages followed by different letters in the column are significantly different at  $p=0.05$ .

## NDVI Field Image July 18



## Yield by Treatment





**on-farm network**  
PARTICIPATORY • PRECISE • PROACTIVE

## Pea Seeding Rate Trial

### Overall Yield & Economics

	Mean (bu/ac)	Cost †	Change in Profit ††
141lbs/ac	57.8	\$68.93/ac	
180lbs/ac	58.7	\$87.99/ac	-\$19.06/ac
216lbs/ac	61.1	\$105.59/ac	-\$36.66/ac
P-Value	0.492		
CV	6.5%		
Significance	No	Economic	No

† Assuming a seed cost of \$29.33/bu (Source: Manitoba Agriculture 2024 Cost of Production Guidelines)

†† Change in profit is calculated as the difference in cost between seeding rate treatments. Because yields were not significantly different, there is no increased income to offset the increase in seed cost