

Soybean Seeding Rate Trial

Trial ID: 2023-SSR06 – R.M. of Brokenhead

Objective: Quantify the agronomic and economic impacts of different soybean seeding rates

Summary: There were no significant yield differences among seeding rates of 165,000 and 220,000 seeds/ac. As a result, there was a decrease in profit equivalent to the increase in seed cost for the higher seeding rates.

Trial Information

| | |
|--------------------------|-------------------|
| Treatment | 165k vs. 220k |
| Soil Texture | Clay Loam |
| Previous Crop | Wheat |
| Tillage | Conventional |
| Seeding Equipment | 35 ft Press Drill |
| Seeding Date | May 20 |
| Variety | Rosser |
| Germination | 98% |
| Row Spacing | 7.5" |
| Harvest Date | October 16 |

Precipitation (mm)

| | May | June | July | Aug | Total |
|-----------------|------|------|------|------|-------|
| Rainfall | 53.6 | 57.1 | 53 | 39 | 203 |
| Normal | 54 | 89.9 | 73 | 72.6 | 290 |
| % Norm | 99% | 64% | 73% | 54% | 70% |

Plant Stand (plants/ac)

| | V2 | R6 |
|-------------|---------|---------|
| 165k | 108,000 | 104,000 |
| 220k | 158,000 | 160,000 |

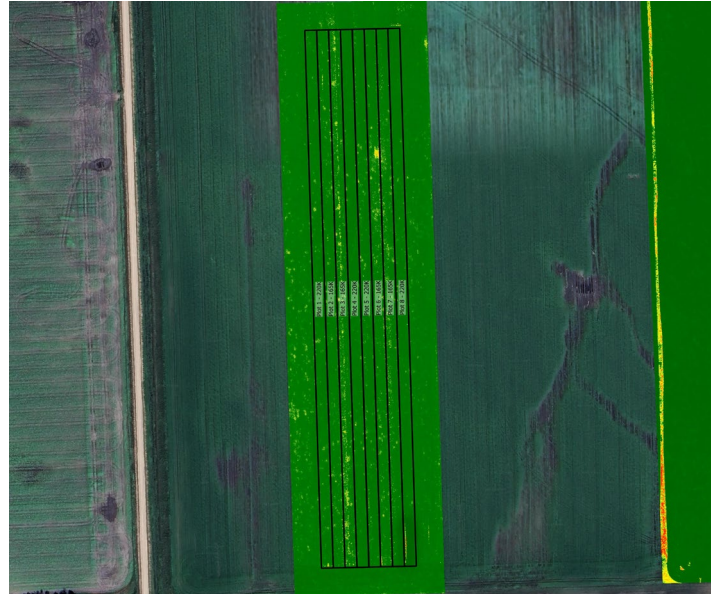
Plant Establishment and Survivability †

| | Establishment at V2 | Survivability to R6 | Change V2 to R6 |
|-------------|---------------------|---------------------|-----------------|
| 165k | 65% | 63% | -2% |
| 220k | 72% | 73% | +1% |

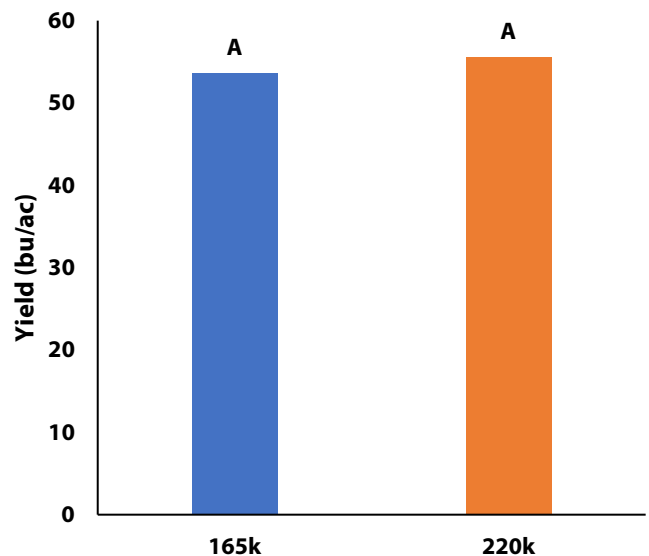
† % establishment = plant count at V stages/seeding rate; % survivability = plant count at R stages/seeding rate

Germination at this trial was 98%.

NDVI Field Image August 14



Yield by Treatment





on-farm network
PARTICIPATORY • PRECISE • PROACTIVE

Soybean Seeding Rate Trial

Overall Yield & Economics

| | Mean (bu/ac) | Cost † | Change in Profit †† |
|---------------------|--------------|-----------------|-----------------------|
| 165k | 53.6 | \$80/ac | |
| 220k | 55.5 | \$107/ac | -\$26.68/ac |
| P-Value | 0.0577 | Economic | 165k → 220k No |
| CV | 2.8% | | |
| Significance | No | | |

† Based on a \$67.90/unit soybean seed costs (Source: Manitoba Agriculture 2023 Cost of Production Guidelines)

†† Change in profit is calculated as the difference in cost between seeding rate treatments. Because yields were not significantly different, there is no increased income to offset the increase in seed cost