



**on-farm network**  
PARTICIPATORY • PRECISE • PROACTIVE

# Soybean Biological Trial

**Trial ID:** 2023-SB08 – R.M. of Grey

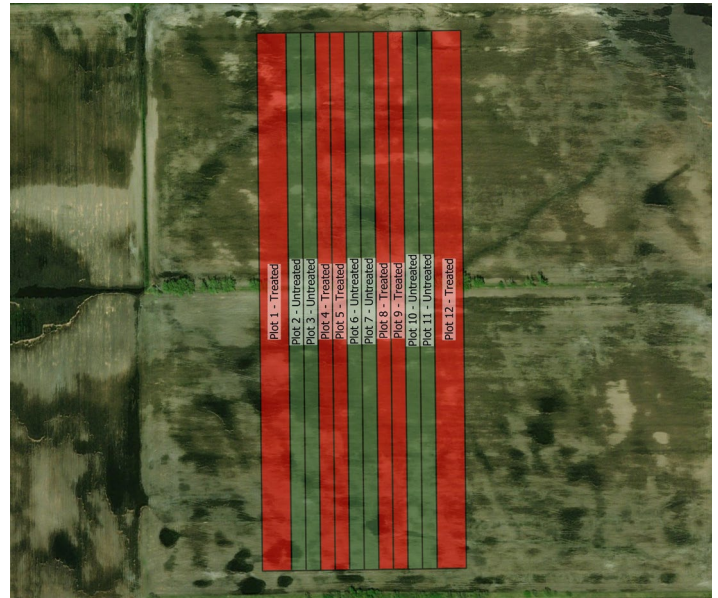
**Objective:** Quantify the agronomic and economic impacts of biological products for soybean production.

**Summary:** There was no significant yield difference between soybeans treated with Envita™ and those without. Due to the lack of yield response, there was a decrease in profit/ac in the treated area of the trial, equivalent to the cost of product.

## Trial Information †

<b>Treatment</b>	Envita™
<b>Soil Texture</b>	Loamy Fine Sand
<b>Previous Crop</b>	Corn
<b>Tillage</b>	Conventional
<b>Seeding Date</b>	-
<b>Variety</b>	TH 88007R2X
<b>Seeding Rate</b>	-
<b>Row Spacing</b>	30"
<b>Plant Stand @ V2</b>	144 000 plants/ac
<b>Harvest Date</b>	October 13

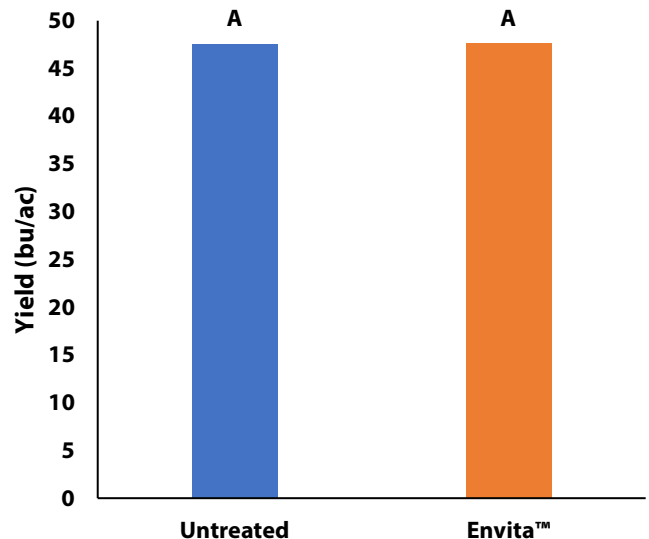
## Field Image



## Precipitation (mm)

	May	June	July	Aug	Total
<b>Rainfall</b>	22.5	22.8	19	30.9	95.1
<b>Normal</b>	53.8	80.6	66	71	271
<b>% Norm</b>	42%	28%	29%	44%	35%

## Yield by Treatment





**on-farm network**  
PARTICIPATORY • PRECISE • PROACTIVE

## Soybean Biological Trial

### Overall Yield & Economics

	Mean (bu/ac)	Cost †	Change in Profit ††
<b>Envita™</b>	47.6	\$13/ac	-\$13/ac
<b>Untreated</b>	47.6		
<b>Yield Difference</b>	No difference		
<b>P-Value</b>	0.9279		
<b>CV</b>	2.4%		
<b>Significance</b>	<b>No</b>	<b>Economic</b>	<b>No</b>

† Based on an estimated cost for biological products

†† Yields were not significantly different, therefore there is no increased income to offset the cost of the biological product