

Pea Fungicide Trial

Trial ID: 2023-PF01 – R.M. of Dauphin

Objective: Quantify the agronomic and economic impacts of a single foliar fungicide application in field peas.

Summary: Ascochyta/Mycosphaerella blight was prevalent throughout the trial. Untreated peas had 22% more plants with stem infections and more severe foliar infections than peas with a fungicide application. There was a significant yield increase of 9.1 bu/ac with a single application of RevyPro fungicide. As a result, profit/ac in the treated area increased by \$68-81/ac.

Trial Information

Treatment	RevyPro
Application Timing	R2
Application Date	June 24
Application Rate	405 mL/ac
Application Method	Broadcast
Soil Texture	Loamy Clay Loam
Previous Crop	Wheat
Tillage	Zero Till
Seeding Date	May 4
Variety	AAC Carver
Seeding Rate	190 lbs/ac
Row Spacing	10"
Plant Stand @ R3	357 000 plants/ac
Harvest Date	August 14

Precipitation (mm)

	May	June	July	Aug	Total
Rainfall	36.6	32.9	15	53	138
Normal	54.3	86.7	73	63.3	278
% Norm	67%	38%	20%	84%	50%

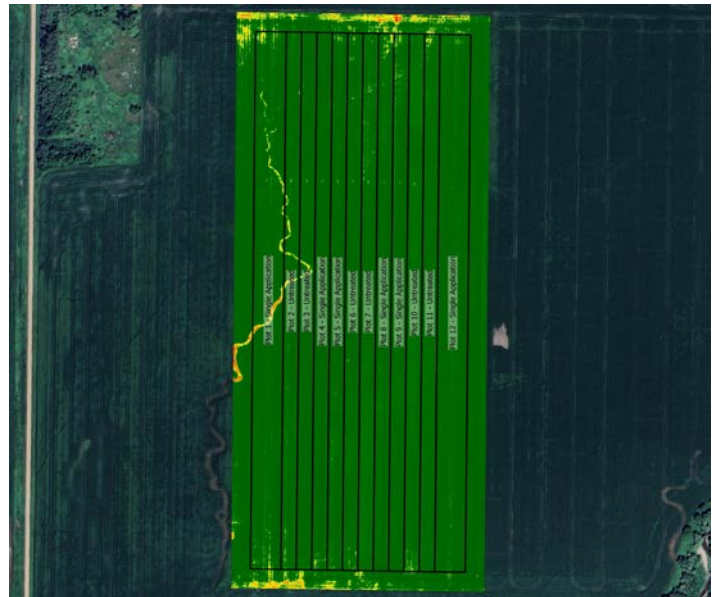
Summary of Disease Rating (R3)[†]

Ten symptomatic plants were randomly selected for resistance testing from untreated areas of the field. 0.2% of the Ascochyta/Mycosphaerella blight population at this trial was resistant to group 11 fungicides.

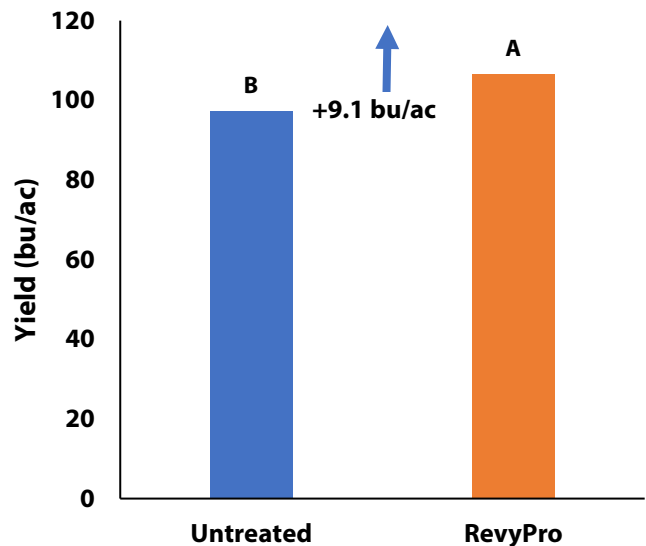
	Foliar A/M		Stem A/M	
	UNTRT	SGL	UNTRT	SGL
Incidence	100%	100%	75%	97%
Severity	4.9	2.6	1.8	2

[†] SGL=Single application; Foliar and stem Ascochyta/Mycosphaerella (A/M) 1 – 7 rating scale where 1 is least severe and 7 is most severe. Incidence = percent of plants infected.

NDVI Field Image July 25



Yield by Treatment





Overall Yield & Economics

	Mean (bu/ac)	Cost †	Change in Profit (pea price of \$10/bu) ††
Single Application	106.5 A	\$10-\$23/ac	\$68-\$81/ac
Untreated	97.4 B		
Yield Difference	9.1		
P-Value	<0.001		
CV	0.017		
Significance	Yes	Economic	Yes

† Based on an estimated fungicide product cost of \$10-\$23/ac, product cost only, does not include application cost

†† Profit is the difference between the change in income/ac from a significant yield difference, and the range in cost/ac of the fungicide



Symptoms of Ascochyta/Mycosphaerella blight at R1 on June 15. Small, dark freckles on lower leaves.