



on-farm network
PARTICIPATORY • PRECISE • PROACTIVE

Pea Fungicide Trial

Trial ID: 2022-PF09 – R.M. of Minitonas-Bowsman

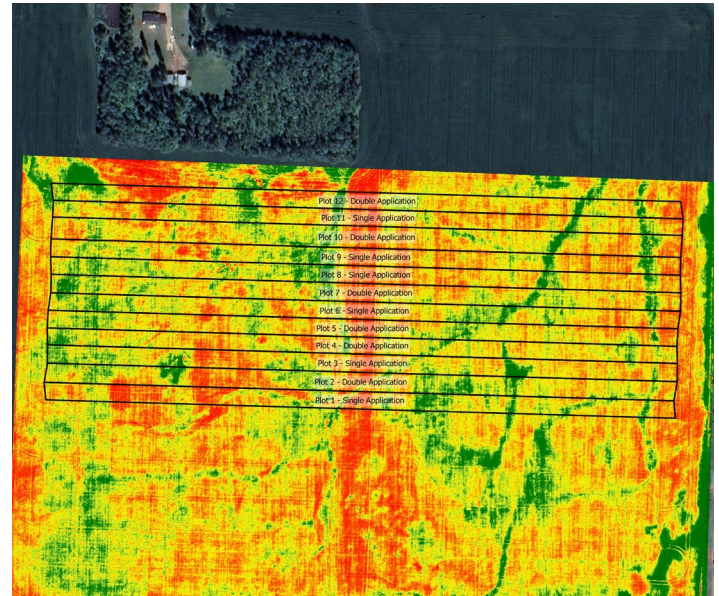
Objective: Quantify the agronomic and economic impacts of a single vs. double foliar fungicide application in field peas.

Summary: Foliar and stem ascochyta were present throughout the trial. There was a significant yield increase of 5.2 bu/ac for peas with a double fungicide application compared to peas with a single fungicide application. This yield increase was more than enough to pay for the cost/ac from a double application of fungicide.

Trial Information

Treatment	Headline vs Headline + Cotegra
Application Timing	First Flower / Full Flower
Application Date	July 11 / July 25
Application Rate	280 ml/ac
Application Method	Broadcast
Soil Texture	Clay Loam
Previous Crop	Spring Wheat
Tillage	Conventional
Seeding Date	May 12
Variety	Chrome
Seeding Rate	3.5 bu/ac
Row Spacing	10"
Plant Stand @ R4	227,000 plants/ac
Harvest Date	August 24

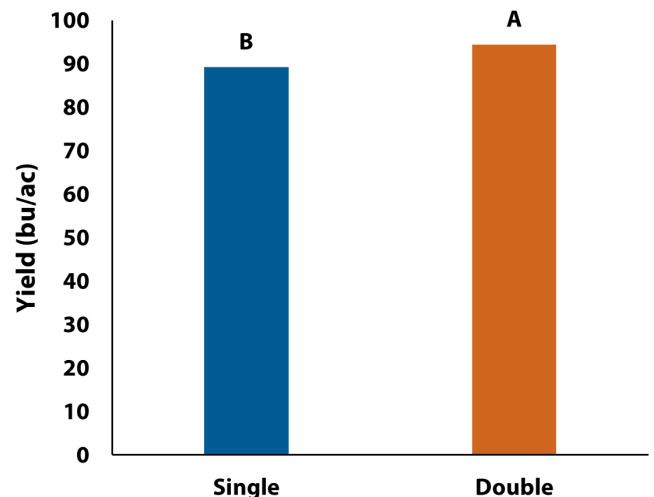
NDVI Field Image August 11



Precipitation (mm)

	May	Jun	Jul	Aug	Total
Rainfall	114.1	59.7	42.7	41.9	258.4
Normal	45.4	84.2	85.6	68.3	283.5
% Normal	251%	71%	50%	61%	91%

Yield by Treatment



Summary of Disease Rating (R4) †

	Foliar Ascochyta		Stem Ascochyta	
	Single	Double	Single	Double
Incidence	93%	100%	57%	58%
Severity	2.7	3.0	1.7	1.6

† Foliar and stem ascochyta are rated on a scale of 1 (no symptoms) to 7 (stunted/dead plants).



on-farm network
PARTICIPATORY • PRECISE • PROACTIVE

Pea Fungicide Trial

Overall Yield & Economics

	Mean (bu/ac)	Cost †	Change in Profit/ac ^{††}	
			Long-Term Average (\$5.33-\$11.47/bu)	Current Conditions (\$11-\$13/bu)
Double Application	94.4	\$37/ac	\$9-\$41/ac	\$39-\$49/ac
Single Application	89.2	\$18.50/ac		
Yield Difference	5.2			
P-Value	0.0108			
CV	5.0%			
Significance	Yes	Economic	Yes	Yes

† Based on MB Agriculture 2022 *Cost of Production Guidelines* and industry prices; treatment cost only, does not include application cost.

†† Change in profit/ac is calculated from profit gained or lost due to yield differences, treatment cost/ac, and market prices; Long-term average prices are based on Manitoba Agriculture's Historical Manitoba Crop Prices (2017-2021).